

# The Ranch Forecaddie

Volume 6, Issue 5

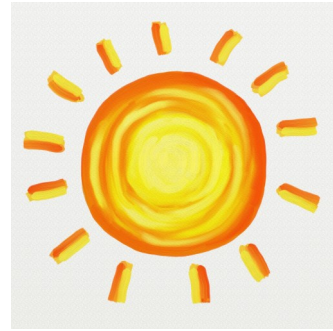
May 2023

## Golf in May

May begins with hot temperatures after a very short spring. As we move into the hotter weather, don't forget to take extra hydration with you to the golf course. Pay special attention to hydration options that offer replacement minerals, as water alone is not enough! We stock Gatorade and a no-sugar electrolyte option call LMNT for those watching their sugar intake. Stay in tune with the Forecaddie to keep up-to-date with everything Pro Shop and golf course related. In the sections following, you will find all the information relating to this month in golf, as well as contact information for our golf associations and our Greens Committee.

Please don't hesitate to contact us with any questions.

Mike Jahaske, PGA  
Director of Golf  
SaddleBrooke Ranch Golf Club



## Pro Shop Schedule

Pro Shop Hours - Open 30 minutes before the first tee time and 1 hour before shotguns. The pro shop closes at 4:00pm. Pro shop staff will carry the pro shop cell phone (520-561-1196) until 6:00.

Staff is available until one hour before sunset.

First tee time: 5-1 to 5-31: 7:00am

Last tee time: 5-1 to 5-31: 6:00pm

Shotguns: 8:00/1:00

Rate Periods:

5-1 to 5-31: Prime 7:00 - 11:52

Midday 12:00 - 1:52

Twilight 2:00 - 3:22

Super Twilight 3:30 - Sunset



## Golf Maintenance Schedule

A maintenance plan is put into place at the beginning of the year. Variance in weather and agronomic conditions may require changes to the schedule.

### May Maintenance Schedule

We will continue closing one hole per nine to cart traffic to help maintain the quality of the turf. We will also continue our program of resting the natural turf one week per month, except in December and January, when it will be rested for two weeks in those months due to the slowing of the growth rate of the rye overseed, and the heavy use of the driving range.

The Bermuda turf is up and in full growth mode. Please support our maintenance staff by filling divots with sand and repairing ball marks on the green. Cart traffic is highly damaging to the turf, so please limit time on the turf as much as possible.

During May the crew will be spending more time on the course mowing, as all the turf, including the rough, will be actively growing. Please be patient if you encounter them. Heavy mow days are Monday, Wednesday, and Friday.

**Back Nine morning nine hole times** will not be available on Monday, Wednesday, and Friday on a year-round basis to allow maintenance time to complete weekly tasks.



## Free Monthly Golf Clinic

Every month Mike and Ken will conduct a free golf clinic. All residents and their guests are welcome to attend, and there is no cost. Please sign up in the Pro Shop. The staff have a book behind the counter with all the scheduled clinics that you can sign up for. You are welcome to attend as often and as many as you like! The clinics will cover basic technique and mechanics of each topic. Our golf clinics are great for learning a new skill or brushing up a skill that needs some work.

**The next clinic will cover the full swing and will be held on Monday, May 22nd at 9:00 am at the driving range. Please see your Chelsea home page event calendar for the full clinic schedule.**

## Golfing News

### Golf Course Access

Dear Residents, as much of the community activities have been closed for precautionary measures to help reduce exposure to the COVID-19 virus, many of you have taken to walking as a way of exercise and to get out of the house. Please remember that for your safety, we do not allow joy riding, walking, biking, jogging, etc. on the golf course **AT ANY TIME**. Only golfers, golf staff, or emergency or other authorized service vehicles are allowed on the golf course and paths.

Thank you for your understanding and cooperation!

### Eliminate Potential for Cup Damage

When using a "ball grabber" attached to the end of a putter to extract a ball from the cup, please remove the flagstick first to eliminate the potential for damage to the edge of the turf surrounding the cup. Thank you.

## Golfing News Cont.

### Cart Rules

The following rules shall apply to all types of golf carts, both rental and privately-owned:

- DRIVE ON CART PATH until even with ball, then enter turf at 90° when gates are not present.
- SCATTER ACROSS TURF until ball is on green.
- EXIT TURF at 90° to cart path.
- REMAIN ON CART PATH on all Par-3 holes.
- STAY 25 FEET from tees and greens.
- DO NOT DRIVE around sides or back of greens.
- DO NOT DRIVE in the desert.
- DO NOT ENTER private resident property to retrieve golf balls.

### Ball Marks

Our greens have been in service for almost 18 months now. Aaron and his crew are doing a great job keeping them smooth and fast. To do our part as golfers, we should make every effort to keep ball marks repaired! Ball marks that are repaired immediately heal faster and create less surface disruption resulting in a smooth green. Let's do our part to keep the greens looking good! Please remember to stay in the habit of finding and repairing ball marks on the greens to help keep them rolling smoothly.

### Pace of Play

Please follow these simple tips to improve pace of play without having to rush around the course:

1. Be prepared to play your shot while waiting for others to hit, so you can play immediately without delay. This includes shots played while on the putting green.
2. Clean and replace your club in the bag; and record your score, at the next tee, not at the green.
3. Hit a provisional ball when appropriate, and limit searches for lost balls to 3 minutes. Players in the group that can hit safely should do so; while those that can't, should help search.
4. Limit socializing to periods when you are prepared to hit and there is a wait to safely hit.

Have fun on the course, and keep your play efficient, so all can experience an enjoyable pace of play!

### Cart Damage to the Course

Without question, cart traffic is the number one cause of damage to the turf on the course. Please do your best to limit the time your cart is on the turf. One easy way to do that is by staying on the cart path until even with your drive. This simple tip can reduce wear and tear exponentially because entering the turf area early is the most common mistake made by golfers in terms of course damage.

---

## Rules Question of the Month

**Q:** What can I do if, when dropping a ball for taking relief from a red penalty area, the ball keeps rolling outside of the relief area?

**A:** After dropping the ball twice, place the ball on the spot the ball landed when being dropped. If the ball will not stay after two attempts, the player must place the ball on the nearest spot where the ball will stay at rest. This may result in the ball be placed outside of the relief area; however this location must not be closer to the hole and must also be in the same area of the golf course, i.e. the General Area. See Rule 14.2e and 14.3c(2).

## Golf Maintenance News

### Maintenance Notes For May

#### Odds And Ends Around The Course

**Traffic control is critical to maintaining course condition—please obey our traffic control measures.**

- It has been brought to my attention that golfers are having issues hitting the cart directional signs as you approach the greens with their golf balls, specifically the center sign. These are the arrow shaped signs we use to control traffic wear patterns as you exit the end of the golf hole. I have agreed to remove the center sign that is located in the fairway/approach on a trial basis. If we notice that golfers are not obeying the signage adjacent to the fairway and driving closer than directed, we are going to return the signs to the center of the fairways.
- On #10 first fairway we are going to close the bridge access for a couple weeks to allow the turf on either side of that bridge to recover. Please obey the signage and exit the first fairway using the cart path.
- Please be aware of the short white stakes along the cart paths and other areas around the course. These designate weak areas that need rest from cart traffic for recovery.

Continued on next page.



## Golf Maintenance News Cont.

### Spot Watering Around The Course

- Please be aware of our small portable sprinklers around the course, these are going to be placed in weak areas to promote recovery of the turf. You'll notice the sprinkler and hose. These are typically set on a program in the irrigation clock and come on automatically. Please don't park right next to them in case they come on while you're parked there.

### Native Areas

- With the hotter weather we have increased our watering around the course to encourage and maintain turf density. As a result any casual water will leave the turf areas and collect in the designated retention basins around the course. We have been regularly adding B.t.i. Briquettes to control mosquitoes - <https://www.amguardtech.com/product/summit-b-t-i-briquets-larvicide-with-bti/>
- The wild flowers in the native areas surrounding the course are starting to dry down and will be done flowering soon. We plan to start mowing down the native areas in the next week or two. This is a 3-4 week process to complete so please be patient. **As a reminder we mow the native areas - 2-3x a year.**

### Miscellaneous -

We are no longer using seed in the divot mix and no longer using the green colored divot sand for the summer.

**I would like to thank our Adopt a Hole residents and everyone else who takes an active role in maintaining and improving our course conditions. Everything you do helps - taking care of a couple extra balls marks on each green, filling divots that aren't your own, etc... All these things make a difference - THANK YOU!**

Aaron Thomas

SBR Golf Course Superintendent



## Tip from the Pro

### Chelsea Resident Home Page Golf Information

Over the years, resident golfers have requested many sources of information regarding the golf facility be made available in convenient access. The Chelsea resident home page became the landing point for this access. As a reminder, here is a list of many of the items to be found by simply scrolling down the home page.

- Frost/Course Condition Information
- Golf Course Maintenance Closure Schedule
- Event Schedule
- Rate Sheet and Application for Annuals and Playcards
- Golf Course Local Rules
- Greens Committee Minutes
- Chelsea User Guide



Check it out and let us know what you think!

Mike Jahaske PGA, Director of Golf

## Contact Information

**Pro shop:** 520-818-6403      **After Hours Cell:** 520-561-1196

**Golf Maintenance:** **Email:** aaron.thomas@robson.com

**Phone:** 520-600-8797

**Chelsea:** <https://sbranch.chelseareservations.com>

Your Chelsea home page has access to tee times and events as well as the golf event and maintenance calendars, special event news, rate sheets and annual/play card applications, seasonal daily frost delay info and golf starting times, and Greens Committee minutes.

**SBRMGA:** [www.sbrmga.com](http://www.sbrmga.com)

**SBRWGA:** [www.sbrwga.com](http://www.sbrwga.com)

**SBR Ranchette Putters:** [susanamorrill52@yahoo.com](mailto:susanamorrill52@yahoo.com)

**Greens Committee:** [SBRGreens@gmail.com](mailto:SBRGreens@gmail.com)

Contact Us!